

**ECONOMIC INDICATORS** QUEENSLAND

EMBARGOED UNTIL 10:30AM THURS 28 MARCH 1996

**MARCH KEY POINTS**

**AUSTRALIA**

**NATIONAL ACCOUNTS**

- Gross Domestic Product – Average, in trend terms at average 1989–90 prices, was \$106 791m for December quarter 1995, an increase of 3.3% from December quarter 1994.
- Exports of goods and services, in trend terms, totalled \$23 628m in December quarter 1995, increasing 6.7% from December quarter 1994.
- Imports of goods and services, in trend terms, totalled \$23 084m in December quarter 1995, increasing 2.5% from December quarter 1994.

**BALANCE OF PAYMENTS**

- In trend terms, the current account deficit decreased 0.7% to \$1 785m in January 1996 from \$1 797m in December 1995, and decreased 25.8% from January 1995.

**QUEENSLAND**

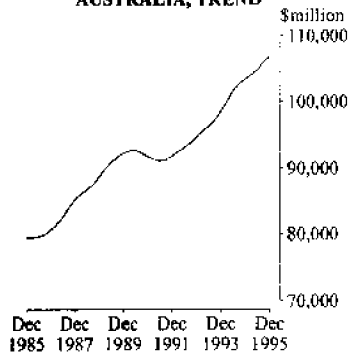
**UNEMPLOYMENT RATE**

- In trend terms, the unemployment rate decreased from 9.4% in January 1996 to 9.3% in February 1996.
- The unemployment rate for females, in trend terms, remained unchanged at 8.8% in February 1996, while for males it decreased to 9.7% from 9.9% in January 1996.
- For persons aged 15 to 19 years, the unemployment rate decreased from 25.4% in January 1996 to 19.8% in February 1996.

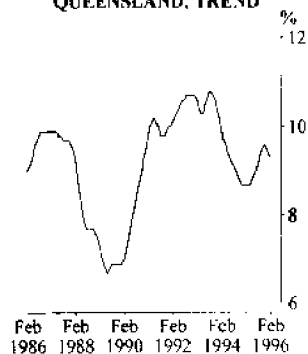
**RETAIL TRADE**

- In trend terms, retail trade turnover increased to \$1 825.1m in January 1996 from \$1 820.0m in December 1995.

**GROSS DOMESTIC PRODUCT (A), AUSTRALIA, TREND**



**UNEMPLOYMENT RATE, PERSONS, QUEENSLAND, TREND**



**INQUIRIES**

- For further information about these and related statistics, contact the Inquiry Service on 07 3222 6351, or any ABS office.

# ECONOMIC INDICATORS NOTES

FORTHCOMING ISSUES	ISSUE	RELEASE DATE
	April 1996	26 April 1996
	May 1996	29 May 1996
	June 1996	27 June 96

.....

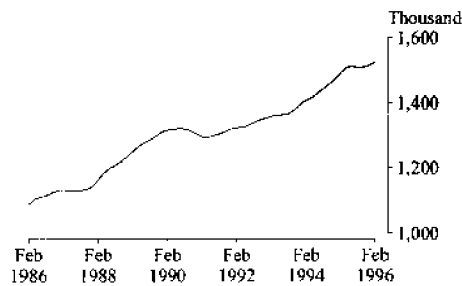
CHANGES IN THIS ISSUE Nil.

\*\*\*\*\*

R.A. CROCKETT  
DEPUTY COMMONWEALTH STATISTICIAN

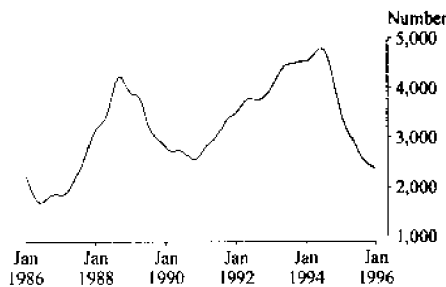
# COMMENTARY

**TOTAL EMPLOYED PERSONS, QUEENSLAND, TREND**



Total employed persons in Queensland, in trend terms, increased to 1 523 800 in February 1996, continuing an upward trend since October 1995. The total number of employed persons was 2.3% or 34 400 higher than the number employed in February 1995. Of total employed persons in February 1996, 869 600 were males and 654 200 were females. In the 12 months to February 1996, the number of full-time employed males increased by 2.0%, compared with a 5.0% increase for females.

**DWELLING UNITS APPROVED, QUEENSLAND, TREND**



Total dwelling units approved in Queensland, in trend terms, totalled 2 394 in January 1996, decreasing marginally from December 1995 and decreasing 32.2% from January 1995. The value of dwelling units approved, in original terms, was \$177.7m for January 1996, decreasing 28.8% from January 1995.

## LIST OF TABLES

		<i>Table</i>		<i>Page</i>
MAJOR INDICATORS AUSTRALIA	1	Australian National Accounts		7
		Balance of Payments		6
		Exchange Rate Levels		6
		Foreign Investment in Australia		6
MAJOR INDICATORS, QUEENSLAND	2	Bankruptcies		9
		Final Consumption Expenditure		8
		Foreign Trade		9
		Gross Fixed Capital Expenditure		8
		Gross State Product – Income Based		8
		Interstate Trade		9
		Private New Capital Expenditure		8
		State Final Demand		8
		Total Business Names Registered		9
PRODUCTION AND CONSUMPTION	3	Indexes of Manufacturing Gross Product		10
		Mineral Exploration		11
		Mineral Production		11
		New Motor Vehicle Registration		11
		Retail Trade Turnover		11
		Short-term Accommodation		10
LABOUR FORCE AND DEMOGRAPHY	4	Average Weekly Earnings		13
		Award Rates of Pay Indexes		14
		Employed Persons		12
		Employed Wage and Salary Earners		13
		Estimated Resident Population		14
		Estimated Resident Population at 30 June		14
		Industrial Disputes		14
		Industry of Employed Persons		13
		Job Vacancies		13
		Labour Force		12
		Overtime		13
		Participation Rates		12
		Population Growth		14
		Short-term Overseas Movement		14
		Unemployed Persons		12
		Unemployment Rates		12
BUILDING AND CONSTRUCTION	5	Building Approvals		15
		Dwelling Unit Commencements		15
		Engineering Construction		15



## MAJOR INDICATORS—Australia

## BALANCE OF PAYMENTS.....

Month	Merchandise exports	Merchandise imports	Balance on merchandise trade	Balance on goods and services	Balance on current account	Net income and unrequited transfers
TREND (\$ million)						
<b>1995</b>						
October	6 091	6 271	-180	-264	-1 792	n.a.
November	6 155	6 307	-152	-240	-1 795	n.a.
December	6 237	6 380	-143	-233	-1 797	n.a.
<b>1996</b>						
January	6 316	6 467	-151	-241	-1 785	n.a.

## TREND (% change from corresponding period of previous year)

<b>1996</b>						
January	14.2	4.8	..	..	..	n.a.

## ORIGINAL (\$ million)

<b>1995</b>						
October	6 247	6 701	-455	-615	-2 367	-1 752
November	5 933	6 832	-905	-947	-2 599	-1 652
December	6 762	5 946	815	822	-714	-1 536
<b>1996</b>						
January	5 879	6 475	-582	-466	-1 869	-1 403

## ORIGINAL (% change from corresponding period of previous year)

<b>1996</b>						
January	20.8	11.9	..	..	..	-18.3

FOREIGN INVESTMENT IN AUSTRALIA<sup>1</sup>.....EXCHANGE RATE LEVELS<sup>2</sup>.....

Quarter	Official	Non-official	Net foreign debt	\$US/\$A	Yen/\$A	Trade-weighted index <sup>3</sup>
	\$m	\$m	\$m			
<b>1995</b>						
March	74 601	312 110	171 275	0.7486	72.09	50.7
June	74 972	325 972	180 590	0.7278	61.42	48.4
September	76 140	330 412	179 456	0.7407	69.76	53.8
December	79 897	344 658	184 864	0.7485	75.93	53.9

## % CHANGE FROM CORRESPONDING PERIOD OF PREVIOUS YEAR

<b>1995</b>						
December	2.7	14.8	8.5	-0.9	1.7	-4.1

<sup>1</sup> At end of period.<sup>2</sup> Source: Reserve Bank of Australia.<sup>3</sup> Base: May 1970=100.0.

MAJOR INDICATORS—Australia *continued*

AUSTRALIA—NATIONAL ACCOUNTS<sup>1</sup>

Quarter	Final consumption expenditure		Gross fixed capital expenditure		Exports of goods and services	Imports of goods and services	Gross non-farm product – income based	Gross domestic product – income based
	Private	Government	Private	Public				

TREND (\$ million)

<b>1995</b>								
March	62 925	17 709	18 321	4 906	22 304	22 978	101 376	104 339
June	63 524	17 853	18 161	4 900	22 677	23 049	101 819	104 943
September	64 211	17 916	18 066	4 880	23 147	23 069	102 373	105 742
December	64 831	17 966	17 971	4 873	23 628	23 084	102 853	106 392

TREND (% change from corresponding period of previous year)

<b>1995</b>								
December	4.1	2.7	-2.6	0.2	6.7	2.5	2.1	2.5

ORIGINAL (\$ million)

<b>1995</b>								
March	59 937	16 940	16 489	4 189	22 060	22 096	98 101	100 282
June	62 790	18 600	18 555	6 171	21 768	22 484	100 924	103 101
September	64 135	17 785	18 048	4 306	23 361	24 163	101 772	104 369
December	68 231	18 390	19 259	4 816	24 664	23 513	107 310	113 867

ORIGINAL (% change from corresponding period of previous year)

<b>1995</b>								
December	4.0	5.9	-3.1	-3.9	7.1	3.0	2.4	3.8

AUSTRALIA—NATIONAL ACCOUNTS<sup>1</sup>    COMPOSITE LEADING INDICATOR<sup>2</sup>    COMPANY PROFITS

Quarter	Gross domestic product – average	Deviation from long-term trend	\$m
	\$m	%	

TREND

<b>1995</b>			
March	104 028	..	6 263
June	104 868	..	6 277
September	105 920	..	6 344
December	106 791	..	6 285

TREND (% change from corresponding period of previous year)

<b>1995</b>			
December	3.3	..	-1.2

ORIGINAL

<b>1995</b>			
March	99 178	0.28	5 013
June	103 445	-0.37	5 400
September	105 148	-0.73	7 120
December	114 116	n.y.a.	7 210

ORIGINAL (% change from corresponding period of previous year)

<b>1995</b>			
December	4.3	..	-5.9

<sup>1</sup> At average 1989-90 prices.

<sup>2</sup> See explanatory note 6, page 15.



## MAJOR INDICATORS—Queensland

Quarter	FINAL CONSUMPTION EXPENDITURE.....		GROSS FIXED CAPITAL EXPENDITURE		STATE FINAL DEMAND	GROSS STATE PRODUCT-- INCOME BASED
	Private	Government	Private	Public		
TREND (\$ million)						
<b>1994</b>						
December	10 280	2 610	3 564	1 085	17 539	17 067
<b>1995</b>						
March	10 372	2 684	3 596	1 094	17 746	17 104
June	10 471	2 735	3 597	1 098	17 901	17 236
September	10 579	2 727	3 556	1 088	17 950	17 427
TREND (% change from corresponding period of previous year)						
<b>1995</b>						
September	4.0	5.3	2.3	1.9	3.7	2.6
ORIGINAL (\$ million)						
<b>1994</b>						
December	10 873	2 620	3 766	1 112	18 371	16 880
<b>1995</b>						
March	9 825	2 510	3 252	914	16 501	17 134
June	10 279	2 792	3 719	1 365	18 155	17 202
September	10 589	2 779	3 474	958	17 800	17 471
ORIGINAL (% change from corresponding period of previous year)						
<b>1995</b>						
September	3.1	5.1	-4.6	-1.1	1.5	1.3

### PRIVATE NEW CAPITAL EXPENDITURE.....

Quarter	Building and structures	Equipment, plant and machinery	Total
TREND (\$ million)			
<b>1994</b>			
December	436	784	1 220
<b>1995</b>			
March	473	859	1 332
June	462	942	1 403
September	428	1 026	1 454
TREND (% change from corresponding period of previous year)			
<b>1995</b>			
September	5.4	38.0	26.5
ORIGINAL (\$ million)			
<b>1994</b>			
December	444	757	1 200
<b>1995</b>			
March	424	747	1 171
June	532	1 119	1 651
September	367	937	1 304
ORIGINAL (% change from corresponding period of previous year)			
<b>1995</b>			
September	-13.2	20.0	8.3





MAJOR INDICATORS—Queensland *continued*

Quarter	TOTAL BUSINESS NAMES REGISTERED <sup>1</sup>	BANKRUPTCIES <sup>2</sup>	INTERSTATE TRADE <sup>3</sup>	
	No.	No.	Exports \$m	Imports \$m
<b>1994</b>				
December	165 514	620	1 289	3 286
<b>1995</b>				
March	168 988	746	1 361	3 052
June	171 843	762	1 447	2 982
September	173 406	842	1 559	3 396

% CHANGE (from corresponding period of previous year)

<b>1995</b>				
June	6.8	24.1	28.9	1.9
September	4.2	34.7	26.7	6.9

FOREIGN TRADE.....

Month	Exports	Imports
	\$m	\$m
<b>1995</b>		
October	1 273	709
November	1 132	677
December	1 185	617
<b>1996</b>		
January	930	644

% CHANGE (from corresponding period of previous year)

<b>1995</b>		
December	22.6	-1.8
<b>1996</b>		
January	8.4	18.5

<sup>1</sup> Stock at end of period. Source: Queensland Department of Emergency Services.

<sup>2</sup> Source: Commonwealth Attorney-General's Department.

<sup>3</sup> Source: Queensland Government Statistician.

## PRODUCTION AND CONSUMPTION

### AUSTRALIA—INDEXES OF MANUFACTURING GROSS PRODUCT<sup>1</sup>

Quarter	<i>Food, beverages and tobacco</i>	<i>Textiles, clothing, footwear and leather</i>	<i>Chemicals, petroleum and coal</i>	<i>Metal products</i>	<i>Machinery and equipment</i>	<i>All groups</i>
---------	--	---	--	---------------------------	------------------------------------	-------------------

#### TREND

<b>1994</b>						
December	122.1	79.8	117.1	109.5	124.4	116.4
<b>1995</b>						
March	120.5	83.6	119.3	108.9	127.1	117.2
June	120.2	86.7	121.3	109.0	129.1	118.2
September	121.3	87.9	122.3	110.0	130.3	119.2

#### TREND (% change from corresponding period of previous year)

<b>1995</b>						
September	-0.6	10.6	6.3	1.3	7.0	3.7

#### ORIGINAL

<b>1994</b>						
December	132.2	80.0	118.5	112.5	130.0	122.1
<b>1995</b>						
March	114.5	78.1	113.6	102.9	120.0	110.5
June	116.2	89.3	124.8	107.0	129.1	116.9
September	122.7	87.5	122.9	114.1	135.3	122.1

#### ORIGINAL (% change from corresponding period of previous year)

<b>1995</b>						
September	-0.6	6.4	3.7	1.7	9.1	3.5

### QUEENSLAND—SHORT-TERM ACCOMMODATION

#### LICENSED HOTELS, MOTELS WITH FACILITIES

#### SELF CONTAINED UNITS, FLATS AND HOUSES

Quarter	<i>Rooms available</i>	<i>Room nights occupied</i>	<i>Room occupancy rate</i>	<i>Takings from accommodation</i>	<i>Units available</i>	<i>Unit nights occupied</i>	<i>Unit occupancy rate</i>	<i>Takings from accommodation</i>
	'000	'000	%	\$m	'000	'000	%	\$m
<b>1994</b>								
December	40.8	2 405	64.2	225.3	18.0	985	59.5	65.0
<b>1995</b>								
March	41.0	2 188	59.4	204.0	17.8	919	57.3	62.1
June	41.3	2 236	59.8	206.2	18.2	817	49.3	48.8
September	41.9	2 596	67.3	242.5	18.5	1 194	70.1	72.6

#### % CHANGE (from corresponding period of previous year)

<b>1995</b>								
June	2.7	1.5	..	8.3	9.4	6.4	..	14.0
September	3.8	1.6	..	9.0	6.2	4.9	..	8.9

<sup>1</sup> At average 1989-90 prices. Base: 1989-90=100.0.

PRODUCTION AND CONSUMPTION *continued*

QUEENSLAND.....

MINERAL PRODUCTION..... MINERAL EXPLORATION

Quarter	<i>Black coal (saleable)<sup>1</sup></i>	<i>Copper</i>	<i>Gold</i>	<i>Total</i>	MINERAL EXPLORATION \$m
	'000 tonnes	'000 tonnes	'000 kg	\$m	
<b>1994</b>					
December	22 768.0	41.5	6.8	1 231.0	53.7
<b>1995</b>					
March	23 126.0	41.8	6.4	1 203.0	32.4
June	23 629.0	39.7	7.6	1 319.0	44.9
September	25 407.0	63.5	7.0	1 458.0	43.8
% CHANGE (from corresponding period of previous year)					
<b>1995</b>					
June	10.2	-22.9	-3.6	9.9	21.4
September	2.3	-5.0	-0.4	6.0	-2.7

QUEENSLAND.....

RETAIL TRADE TURNOVER NEW MOTOR VEHICLE REGISTRATIONS<sup>2</sup>

Month	\$m	NEW MOTOR VEHICLE REGISTRATIONS <sup>2</sup>	
		<i>Passenger vehicles</i> No.	<i>Total</i> No.
TREND			
<b>1995</b>			
October	1 815.4	7 739	9 625
November	1 817.0	7 763	9 631
December	1 820.0	7 865	9 736
<b>1996</b>			
January	1 825.1	7 935	9 823
TREND (% change from corresponding period of previous year)			
<b>1995</b>			
December	6.0	2.5	-1.1
<b>1996</b>			
January	5.8	3.5	-0.4
ORIGINAL			
<b>1995</b>			
October	1 810.6	8 604	10 747
November	1 894.1	6 873	8 456
December	2 367.1	7 841	9 544
<b>1996</b>			
January	1 824.3	7 721	9 561
ORIGINAL (% change from corresponding period of previous year)			
<b>1995</b>			
December	5.0	-8.2	-12.6
<b>1996</b>			
January	7.7	29.9	30.0

<sup>1</sup> Source: Queensland Coal Board.

<sup>2</sup> Excluding motor cycles, mobile equipment and trailers.

# LABOUR FORCE AND DEMOGRAPHY—Queensland

## UNEMPLOYMENT RATE..... PARTICIPATION RATE.....

Month	UNEMPLOYMENT RATE				PARTICIPATION RATE		
	Males	Females	Persons	Persons aged 15 to 19 years	Males	Females	Persons
	%	%	%	%	%	%	%

### TREND

<b>1995</b>								
November	10.2	8.7	9.6	n.a.	75.3	55.0	65.1	
December	10.1	8.8	9.5	n.a.	75.3	55.0	65.1	
<b>1996</b>								
January	9.9	8.8	9.4	n.a.	75.2	55.0	65.0	
February	9.7	8.8	9.3	n.a.	75.1	54.9	64.9	

### ORIGINAL

<b>1995</b>								
November	9.6	8.3	9.0	20.2	74.9	55.4	65.1	
December	9.7	8.4	9.2	22.4	76.0	56.0	65.9	
<b>1996</b>								
January	11.1	9.2	10.3	25.4	75.3	53.7	64.4	
February	9.7	10.1	9.9	19.8	75.2	54.7	64.9	

## EMPLOYED PERSONS.....

## UNEMPLOYED PERSONS...

PERSONS  
IN THE  
LABOUR  
FORCE

### FULL-TIME..... PART-TIME..... TOTAL

Month	EMPLOYED PERSONS			UNEMPLOYED PERSONS			PERSONS IN THE LABOUR FORCE
	Males	Females	Persons	Males	Females	Persons	

### TREND ('000)

<b>1995</b>									
November	765.2	376.7	96.2	275.3	1 513.4	98.0	62.2	160.2	1 673.6
December	769.1	376.7	94.9	277.2	1 516.9	97.1	62.7	159.8	1 676.7
<b>1996</b>									
January	773.4	374.9	93.5	278.7	1 520.4	95.4	63.1	158.5	1 678.9
February	777.7	374.4	91.9	279.8	1 523.8	93.3	63.0	156.3	1 680.1

### TREND (% change from corresponding period of previous year)

<b>1996</b>									
February	2.0	5.0	3.7	-0.5	2.3	14.5	4.8	10.4	3.0

### ORIGINAL ('000)

<b>1995</b>									
November	765.9	376.1	96.5	283.5	1 522.1	91.7	59.5	151.3	1 673.4
December	781.8	377.1	94.5	290.2	1 543.6	94.5	61.2	155.7	1 699.2
<b>1996</b>									
January	770.5	381.3	85.5	254.4	1 491.8	107.2	64.3	171.5	1 663.3
February	780.9	374.6	90.8	267.6	1 513.9	93.9	72.2	165.5	1 679.4

### ORIGINAL (% change from corresponding period of previous year)

<b>1996</b>									
February	2.8	5.8	4.2	-4.4	2.2	4.2	2.6	3.5	2.4



LABOUR FORCE AND DEMOGRAPHY—Queensland *continued*

INDUSTRY OF EMPLOYED PERSONS.....

Quarter	Mining	Manufacturing	Construction	Wholesale and retail trade	Accommodation, cafes and restaurants	Transport and storage	Finance and insurance	Property and business services	Government administration and defence	Education	Health and community services	Other	Total
	'000	'000	'000	'000	'000	'000	'000	'000	'000	'000	'000	'000	'000
<b>1995</b>													
May	16.8	184.8	127.7	309.5	76.2	80.3	50.5	148.3	63.2	102.4	129.5	208.3	<b>1 497.5</b>
August	19.0	184.7	125.6	310.1	74.8	87.4	39.8	144.1	68.1	112.2	128.0	206.5	<b>1 500.3</b>
November	16.4	184.7	131.9	315.3	81.1	76.2	43.5	147.4	69.0	107.5	131.6	217.5	<b>1 522.1</b>
<b>1996</b>													
February	16.9	183.6	128.0	323.0	73.3	81.4	45.0	147.9	68.1	100.9	136.6	209.4	<b>1 513.9</b>
% CHANGE (from corresponding period of previous year)													
<b>1996</b>													
February	12.0	3.7	-7.6	8.0	-5.2	—	11.1	6.4	16.2	3.8	6.1	-2.3	<b>2.2</b>

EMPLOYED WAGE AND SALARY EARNERS.....

Month	PRIVATE		GOVERNMENT.....			
	Total		Commonwealth	State	Local	Total
	'000		'000	'000	'000	'000
<b>1994</b>						
December	719.1		47.5	193.4	32.7	273.6
<b>1995</b>						
January	726.6		45.7	186.1	32.7	264.6
February	740.1		45.4	191.7	33.4	270.4
March	741.6		45.5	193.1	33.8	272.4
% CHANGE (from corresponding period of previous year)						
<b>1995</b>						
March	6.8		1.3	-1.1	0.3	-0.6

AVERAGE WEEKLY EARNINGS (full-time adult)

JOB VACANCIES

OVERTIME.....

Quarter	AVERAGE WEEKLY EARNINGS (full-time adult)		JOB VACANCIES '000	OVERTIME..... Average weekly hours per employee
	Males \$	Females \$		
<b>1995</b>				
February	629.60	531.70	9.5	1.21
May	643.50	545.40	6.1	1.16
August	641.40	546.20	9.3	1.08
November	653.40	551.50	6.8	1.05

% CHANGE (from corresponding quarter of previous year)

<b>1995</b>				
November	4.8	4.8	-27.7	-16.0

LABOUR FORCE AND DEMOGRAPHY—Queensland *continued*

ESTIMATED RESIDENT POPULATION POPULATION GROWTH DURING PERIOD.....

Quarter	'000	POPULATION GROWTH DURING PERIOD.....			Total No.
		Natural increase No.	Net estimated interstate migration No.	Net estimated overseas migration No.	
<b>1994</b>					
September	3 215.6	5 584	10 379	3 483	19 446
December	3 232.9	5 906	10 888	563	17 357
<b>1995</b>					
March	3 256.0	6 942	12 014	4 108	23 064
June	3 277.4	7 021	11 493	2 857	21 371

% CHANGE (from corresponding period of previous year)

<b>1995</b>					
June	2.5	10.0	6.9	522.4	21.5

ESTIMATED RESIDENT POPULATION AT 30 JUNE.....

Year	Brisbane <sup>1</sup>	Moreton <sup>1</sup>	Wide Bay-Burnett <sup>1</sup>	Far North <sup>1</sup>	Queenland
	'000	'000	'000	'000	'000
<b>1990-91</b>	1 358.0	489.6	195.6	181.4	2 961.0
<b>1991-92</b>	1 387.3	510.4	201.5	185.5	3 032.8
<b>1992-93</b>	1 421.6	533.7	209.3	190.4	3 116.0
<b>1993-94</b>	1 454.4	558.7	216.1	195.7	3 196.1

INDUSTRIAL DISPUTES AWARD RATES OF PAY INDEXES<sup>2</sup> SHORT-TERM OVERSEAS MOVEMENT

Month	Working days lost '000	FULL-TIME ADULT EMPLOYEES		ARRIVALS	DEPARTURES
		Males	Females	'000	'000
		Index No.	Index No.		
<b>1995</b>					
September	4.7	144.1	147.5	115.5	127.1
October	10.4	144.1	147.5	128.4	115.2
November	22.9	144.1	147.5	124.7	124.8
December	3.3	144.1	147.6	n.y.a.	n.y.a.

% CHANGE (from corresponding period of previous year)

<b>1995</b>					
November	..	1.3	1.7	10.2	8.8
December	..	1.3	1.7	n.y.a.	n.y.a.

<sup>1</sup> Statistical Division.

<sup>2</sup> Base: June 1985 = 100.0.

# BUILDING AND CONSTRUCTION—Queensland

## BUILDING APPROVALS.....

### TREND.....

### ORIGINAL.....

Month	New houses	Total dwelling units	New houses	New other residential buildings	Total dwelling units	Value of dwelling units approved	Value of non-residential buildings approved	Total value of all building approved
	No.	No.	No.	No.	No.	\$m	\$m	\$m
<b>1995</b>								
October	1 837	2 479	2 030	464	2 494	228.8	188.2	440.9
November	1 821	2 439	2 056	519	2 575	242.6	226.1	491.6
December	1 809	2 406	1 501	713	2 214	205.1	142.8	362.9
<b>1996</b>								
January	1 807	2 394	1 527	338	1 865	177.7	95.1	289.4
% CHANGE (from corresponding period of previous year)								
<b>1996</b>								
January	-27.2	-32.2	-26.3	-53.3	-33.3	-28.8	-28.8	-27.3

## DWELLING UNIT COMMENCEMENTS.....

## ENGINEERING CONSTRUCTION

Quarter	New houses	New other residential buildings	Value of all dwelling units commenced	Value of non-residential buildings approved	Value of work commenced	Value of work done
	No.	No.	\$m	\$m	\$m	\$m
<b>1995</b>						
March	6 295	2 700	819.6	653.5	643.8	669.5
June	6 278	2 947	869.6	642.2	720.7	774.6
September	6 115	2 296	776.4	583.6	956.0	725.6
December	6 018	1 501	n.y.a.	n.y.a.	n.y.a.	n.y.a.
% CHANGE (from corresponding period of previous year)						
<b>1995</b>						
September	-36.9	-55.4	-43.1	46.8	-5.2	-7.0
December	-31.5	-65.2	n.y.a.	n.y.a.	n.y.a.	n.y.a.

# PRICE INDEXES

## AUSTRALIA.....

Articles produced by manufacturing industry<sup>1</sup>..... Materials used in manufacturing industry<sup>2</sup> Export<sup>3</sup> Import<sup>3</sup>

Month	Food, beverages and tobacco	Basic metal products	Petroleum and coal products	Transport equipment	Fabricated metal products	All groups	Imported	Home produced	All materials	All groups	All groups
<b>1995</b>											
October	125.8	109.5	116.2	122.0	118.9	120.4	142.8	123.1	129.9	95.4	115.7
November	126.3	110.5	123.3	122.1	119.1	121.0	143.4	124.2	130.8	95.8	116.2
December	126.7	111.1	126.6	122.3	119.1	121.4	144.8	125.2	131.9	96.7	116.5
<b>1996</b>											
January	126.8	110.1	124.0	121.9	119.3	121.4	145.6	127.5	133.8	97.4	116.1

### % CHANGE (from corresponding period of previous year)

<b>1996</b>											
January	3.2	1.7	5.2	2.0	2.8	2.8	10.2	3.7	6.1	3.7	4.3

## BRISBANE.....

## QUEENSLAND.....

Consumer price index<sup>2</sup>.....

Established house<sup>3</sup>

Prices received by farmers<sup>4</sup>

Prices paid by farmers<sup>5</sup>

Farmers' terms of trade<sup>6</sup>

Quarter	Food	Housing	Transportation	All groups	Established house <sup>3</sup>	Prices received by farmers <sup>4</sup>	Prices paid by farmers <sup>5</sup>	Farmers' terms of trade <sup>6</sup>
<b>1995</b>								
March	114.1	109.0	116.7	115.8	140.2	115.7	124.3	93.1
June	114.5	110.7	117.4	116.9	137.7	118.6	127.8	92.8
September	115.4	111.4	120.1	117.9	137.0	119.1	129.7	91.8
December	115.8	112.1	120.1	118.6	137.0	113.5	127.9	88.7

### % CHANGE (from corresponding period of previous year)

<b>1995</b>								
December	4.3	7.8	4.1	4.3	-2.1	2.2	5.9	-3.5

## BRISBANE.....

Materials used in house building<sup>6</sup>

Materials used in building other than house<sup>6</sup>.....

Month	All groups	Structural steel	Ready-mixed concrete	All groups
<b>1995</b>				
September	155.9	133.0	107.7	115.5
October	155.6	134.0	106.5	115.3
November	154.7	134.0	105.1	114.6
December	n.y.a.	136.2	105.9	115.0

### % CHANGE (from corresponding period of previous year)

<b>1995</b>				
November	-0.8	5.9	-9.6	2.1
December	n.y.a.	6.5	-8.2	2.0

<sup>1</sup> Base: 1988-89=100.0.

<sup>2</sup> Base: 1984-85=100.0.

<sup>3</sup> Base: 1989-90=100.0.

<sup>4</sup> Base: 1987-88=100.0.

<sup>5</sup> Base: 1985-86=100.0.

<sup>6</sup> Base: 1979-80=100.0.



# BANKING AND FINANCE

## QUEENSLAND—ALL BANKS<sup>1</sup>..... QUEENSLAND—BUILDING SOCIETIES.....

### DEPOSITS..... LOANS..... LENDING OPERATIONS.....

Month	Term	Other <sup>2</sup>	Total	Other lending <sup>3</sup>	Loans advanced	Lending commitments unused	Receipts	Withdrawals
	\$m	\$m	\$m	\$m	\$m	\$m	\$m	\$m
<b>1995</b>								
October	19 443	16 863	36 306	47 833	119.4	160.1	2 011.4	1 929.7
November	19 677	17 237	36 914	48 499	130.8	165.7	2 079.8	2 045.1
December	19 671	17 316	36 987	48 995	137.6	149.8	1 954.0	1 916.6
<b>1996</b>								
January	19 907	17 130	37 037	49 453	110.7	168.4	1 899.1	1 879.1

### % CHANGE (from corresponding period of previous year)

<b>1996</b>								
January	25.2	1.4	12.9	22.2	7.1	-3.6	3.0	2.3

## QUEENSLAND—FINANCE COMMITMENTS.....

### PERSONAL..... COMMERCIAL..... LEASE

Month	PERSONAL				COMMERCIAL				LEASE	
	All banks	Credit cooperatives	Finance companies	Other	Total	All banks	Finance companies	Other	Total	
	\$m	\$m	\$m	\$m	\$m	\$m	\$m	\$m	\$m	
<b>1995</b>										
September	329.5	34.7	91.6	10.5	466.3	1 006.5	113.7	184.2	1 304.3	112.2
October	377.2	36.9	97.7	12.2	523.9	906.3	148.5	170.6	1 225.4	111.1
November	381.3	43.8	96.6	12.8	534.5	1 001.1	120.7	173.0	1 294.8	121.7
December	328.7	43.1	93.8	12.6	478.2	954.8	141.6	184.6	1 288.1	104.1

### % CHANGE (from corresponding period of previous year)

<b>1995</b>										
December	11.9	22.0	12.0	-4.2	12.2	2.1	-39.1	146.4	3.6	-15.6

## QUEENSLAND—HOUSING FINANCE FOR OWNER OCCUPATION

## AUSTRALIA—INTEREST RATES

Month	All banks	Permanent building societies	Other lenders	Total	Housing loans for owner occupation
	\$m	\$m	\$m	\$m	%
<b>1995</b>					
September	603.2	101.8	49.0	753.9	10.50
October	615.3	99.6	63.5	778.4	10.50
November	620.9	107.2	62.4	790.4	10.50
December	488.7	90.3	42.6	621.6	10.50

### % CHANGE (from corresponding period of previous year)

<b>1995</b>					
December	-16.9	-10.1	189.8	-11.6	..

<sup>1</sup> Source: Reserve Bank of Australia. <sup>2</sup> Including certificates of deposit. <sup>3</sup> Excluding non-resident lending.

## BUSINESS EXPECTATIONS

AUSTRALIA..... QUEENSLAND

TRADING PERFORMANCE..... INVESTMENT... EMPLOY- OPERATING INTERNATIONAL SALES  
MENT EXPENSES TRADE .....

Quarter	Sales	Selling prices	Profit	Capital	Stocks		Imports	Exports		
SHORT-TERM OUTLOOK—Expected aggregate change from the previous quarter (%)										
<b>1995</b>										
June	1.4	0.4	3.6	5.5	-0.3	0.1	1.0	1.5	0.8	1.0
September	1.3	0.7	1.5	5.3	-0.1	-0.2	1.1	2.6	-1.3	3.6
December	2.1	0.9	2.9	5.9	0.1	0.1	1.9	3.7	2.6	1.2
<b>1996</b>										
March	-0.2	0.2	-9.6	4.9	-0.7	—	0.9	—	1.7	-0.4

MEDIUM-TERM OUTLOOK—Expected aggregate change from the corresponding quarter of the previous year (%)

<b>1996</b>										
March	3.0	1.7	4.6	3.7	0.5	0.8	2.6	3.0	3.2	3.1
June	2.3	1.5	2.8	7.1	-0.3	-0.1	2.1	2.6	1.0	3.6
September	3.4	1.5	11.0	2.3	0.4	0.1	2.2	4.2	6.2	2.8
December	4.4	1.3	20.0	6.1	0.5	1.0	2.5	4.3	5.0	4.5

AUSTRALIA.....

ACTUAL CAPITAL EXPENDITURE.....

Period	New buildings and structures \$m	Equipment, plant and machinery \$m	Total \$m
<b>1993-94</b>	8 156	20 591	28 275
<b>1994-95</b>	8 966	25 625	34 591

AUSTRALIA.....

EXPECTED CAPITAL EXPENDITURE.....

Period	New buildings and structures \$m	Equipment, plant and machinery \$m	Total \$m
<b>6 months to Dec. 1995</b>	5 627	12 997	18 624
<b>6 months to June 1996</b>	4 607	11 879	16 487
<b>1995-96</b>	10 235	24 867	35 111

# EXPLANATORY NOTES

---

## INTRODUCTION

**1** This publication contains latest estimates for a comprehensive range of economic indicators. Statistics shown in this publication are the latest available at the date of preparation and may be subject to revision in subsequent issues. In a number of cases figures appearing in this publication are preliminary and are subject to revision in subsequent issues. Reference should therefore always be made to the latest issue or to the statistical publication on the specific subject.

## SEASONAL ADJUSTMENT AND TREND ESTIMATION

**2** Seasonal adjustment is a means of removing the estimated effects of normal seasonal variation from the series so that the effects of other influences on the series can be more clearly recognised. Seasonal adjustment does not aim to remove the irregular or non-seasonal influences which may be present in any particular month. This means that month-to-month movements of the seasonally adjusted estimates may not be reliable indicators of trend behaviour.

**3** The smoothing of seasonally adjusted series reduces the impact of the irregular components of the seasonally adjusted series and creates trend estimates. These trend estimates are derived by applying a 13-term Henderson-weighted moving average to all months except the last six. The last six monthly trend estimates are obtained by applying surrogates of the Henderson average to the seasonally adjusted series. Trend series are used to analyse the underlying behaviour of the series over time.

**4** While this smoothing technique enables estimates to be produced for the latest month, it does result in revisions to the most recent months as additional observations become available. Generally, subsequent revisions become smaller and after 3 months have a negligible impact on the series. Revisions also occur as a result of the annual review of seasonal factors.

**5** Users may wish to refer to the ABS Publication: *A Guide to Interpreting Time Series — Monitoring Trends, An Overview* (1348.0) for more detailed information on smoothing seasonally adjusted time series data.

## COMPOSITE LEADING INDICATOR

**6** The CLI is calculated as a simple average of the short-medium term movements in eight indicators. On average during the 1970s and 1980s, the CLI led turning points in the GDP(A) growth cycle by around two quarters, but the lead time for individual peaks and troughs varied considerably. Expansions and slow downs in activity are measured relative to the historical long-term trend; thus *peaks and troughs in the CLI provide early signals of turning points in the growth cycle*, not signals of recessions and recoveries.

## RELATED PUBLICATIONS

**7** Current publications produced by the ABS are listed in the *Catalogue of Publications and Products* (1101.0). The ABS also issues, on Tuesdays and Fridays, the *Release Advice* (1105.0) which lists publications to be released in the next few days. The *Catalogue* and *Release Advice* are available from any ABS office.

## UNPUBLISHED STATISTICS

**8** As well as the statistics included in this and related publications, the ABS may have other relevant unpublished data available. Inquiries should be made to Information Inquiries on (07) 3222 6351 or to any ABS office.

## EFFECTS OF ROUNDING

**9** Estimates have been rounded and discrepancies may occur between totals and sums of the component items.

## SYMBOLS AND OTHER USAGES

n.a.	not available
n.y.a.	not yet available
..	not applicable
—	nil or rounded to zero

## FOR MORE INFORMATION . . .

The ABS publishes a wide range of information on Australia's economic and social conditions. A catalogue of publications and products is available from any of our offices (see below).

### INFORMATION CONSULTANCY SERVICES

Information tailored to special needs of clients can be obtained from the Information Consultancy Service available at ABS Offices (see below).

### ABS PRODUCTS

A large number of ABS products is available from the ABS Bookshops (see below). The ABS also provides a subscription service – you can telephone the ABS Subscription Service Australia wide toll free on 1800 0206 08.

### ELECTRONIC SERVICES

A large range of data is available via on-line services, diskette, magnetic tape, tape cartridge and CD ROM. For more details about our electronic data services, contact any ABS office (see below) or e-mail us at:

X.400 (C:Australia,PUB:Telememo,O:ABS,FN:STAT,SN:INFO)  
Internet Stat.info@abs.telememo.au  
Keylink STAT.INFO/ABS

You can visit us on the Internet at: <http://www.statistics.gov.au>

### GENERAL SALES AND INQUIRIES

- Sydney 02 268 4611
  - Melbourne 03 9615 7755
  - Brisbane 07 3222 6351
  - Perth 09 360 5140
  - Adelaide 08 237 7100
  - Hobart 002 20 5800
  - Darwin 089 43 2111
  - Canberra 06 252 6627
- Information Services, ABS  
PO Box 10, Belconnen ACT 2616



2130730003960

ISSN 0819-2928

RRP \$13.50